

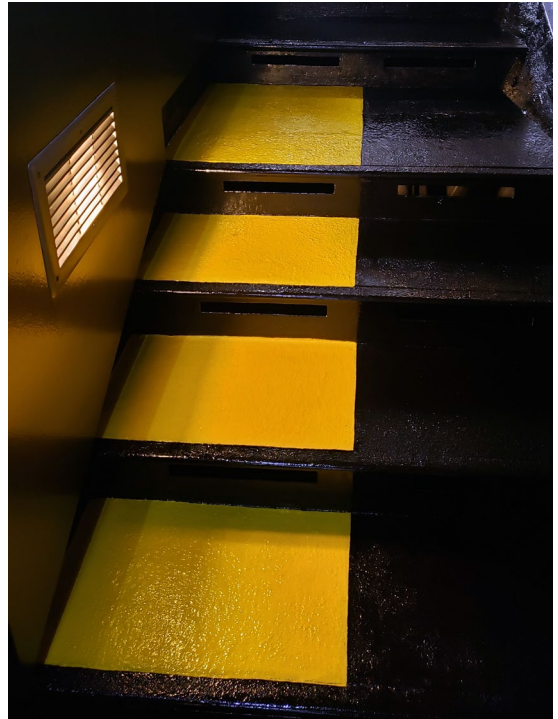


## PRECISION COATINGS



Case History: Gateway Arch, St Louis, MO  
Coatings: - PC6 Polyurethane Custom Silver Metallic: Satin  
- PC5 Polysiloxane in Safety Yellow: Semi-Gloss & Black: Semi-Gloss with Aggregate  
Date: 2020  
Areas Coated: Interior Bulkhead Walls and Stairs to the Viewing Area at top of the Arch  
Contractor: National Park Maintenance Staff

Description: The interior bulkhead walls of the entrance walkway to the viewing area at the top of the Gateway Arch were coated with Precision's PC6 Metallic in a custom silver metallic to resemble the look of the exterior stainless steel skin of the Arch. The stairs were coated with Precision's PC5 with Aggregate to improve the durability, cleanability and slip resistance of the walkway in Safety Yellow and Black.



Photos by: Staff of the Gateway Arch National Park

## PRECISION COATINGS

1940 E. Trafficway, Springfield, MO 65802  
417.862.5738 - [www.precisioncoatingsinc.com](http://www.precisioncoatingsinc.com)

9-20-2020