



PRECISION COATINGS

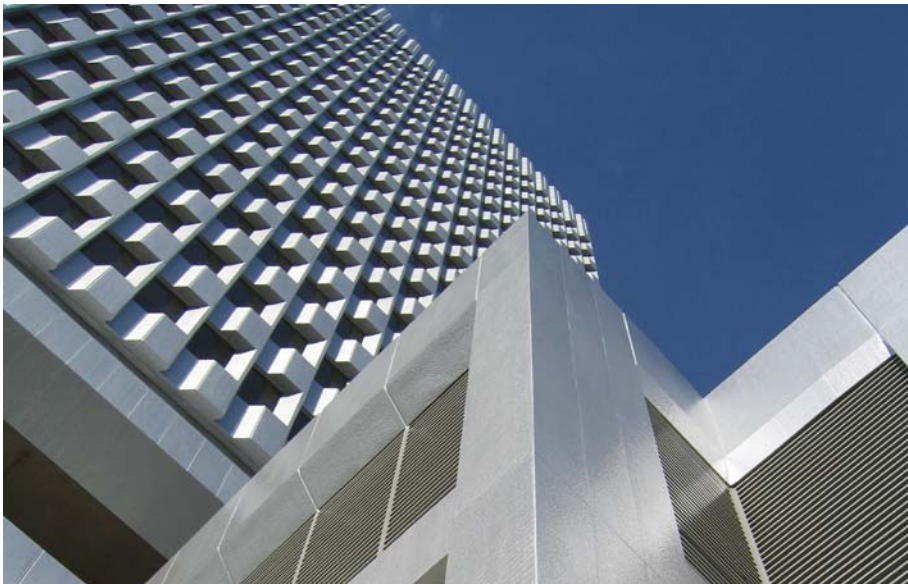
Case History: 6300 Wilshire, Los Angeles, CA
Coatings: PC3 Platinum ASRO Rolling Formula
Date: 11.12.2005

Areas Coated: Structural panels
Mullions
Concrete horizontal and vertical surfaces
Structural steel

Description Twenty-One story, 400,000 square foot office tower with parking garage. Office tower is managed by Tishman Speyer. Original fluorinated coated galvanized steel panels were placed in 1972. Building was recoated in 2005 with PC3 Platinum high cross-link density aliphatic polyurethane. Entire structure was coated with a roller application of PC3 rolling formula.



Photo 9.2007



Steel and concrete substrates